

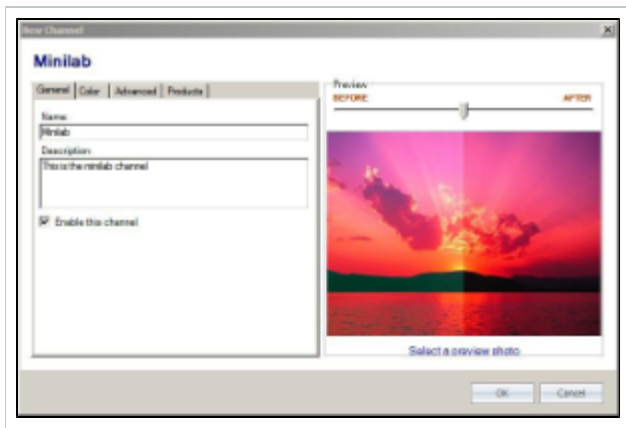
# Auto-Enhancement

To use the auto enhancement feature in Lab 50, you'll first need to enable it within the **Photo Processing** screen.

1. At the top of the **Menu** bar, select **Settings**.
2. On the left panel select **Photo Processing > Auto Enhancement**.
3. Check the box **Enable auto enhancement processing**.
4. Click on the **Add** button at the bottom of the right panel to begin the setup of a new Channel.



5. When the new dialogue box appears, enter a **Name** for the New Channel (Ex. Minilab).
6. (Optional) In the **Description** field, enter a brief description of the channel (Ex. This is the I2E channel for our minilab to sharpen and redden images for color accuracy).
7. Leave the box **Enable this Channel** checked.
8. (Optional) A sample image may be used as a litmus test for the settings for this channel. Click on the \_Select a preview photo\_ link, and then locate the image you would like to use as a sample using the windows dialog box. You can also change this image at any time to see how the settings affect different test images.



**\*\*Note:** The sample image(s) needs to be a Jpeg file and in landscape formatting.