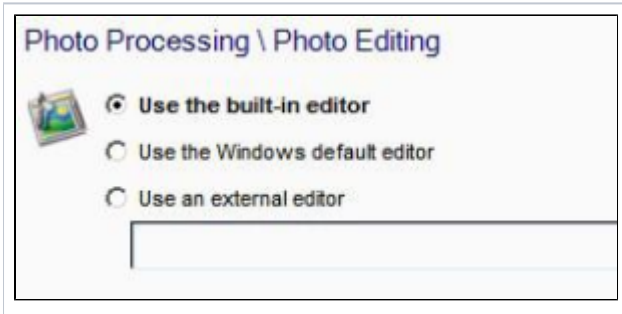


Photo Editing

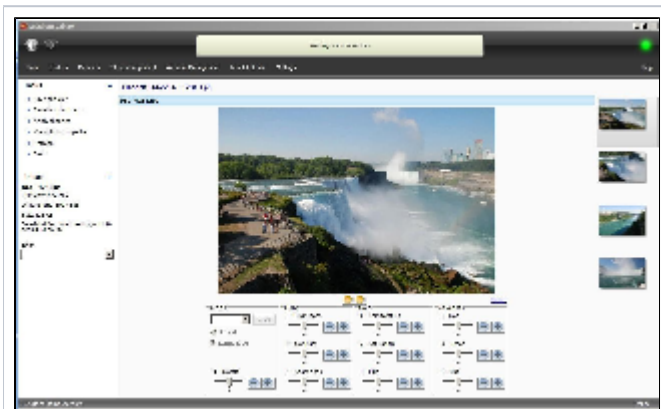
To specify which editor should be used for manually correcting photos from Lab 50, you will need to configure the **Photo Editing** settings found under **Photo Processing**.

Selecting a Preferred Photo Editing Tool

1. At the top of the **Menu** bar, select **Settings**.
2. On the left panel, select **Photo Processing > Photo Editing**.
3. On the right panel, select the editor you would like to use.
4. After making the necessary changes, press **Apply Changes** or **Save and exit**.



The built-in editor offers standard tools to adjust the photo orientation, lighting, and color. Once editing is complete, the changes may be applied to the original photo or saved as a new file, and the editor may continue on to the next photos within the order or closed after a quick, single photo edit.



Lab 50 Image Viewer