

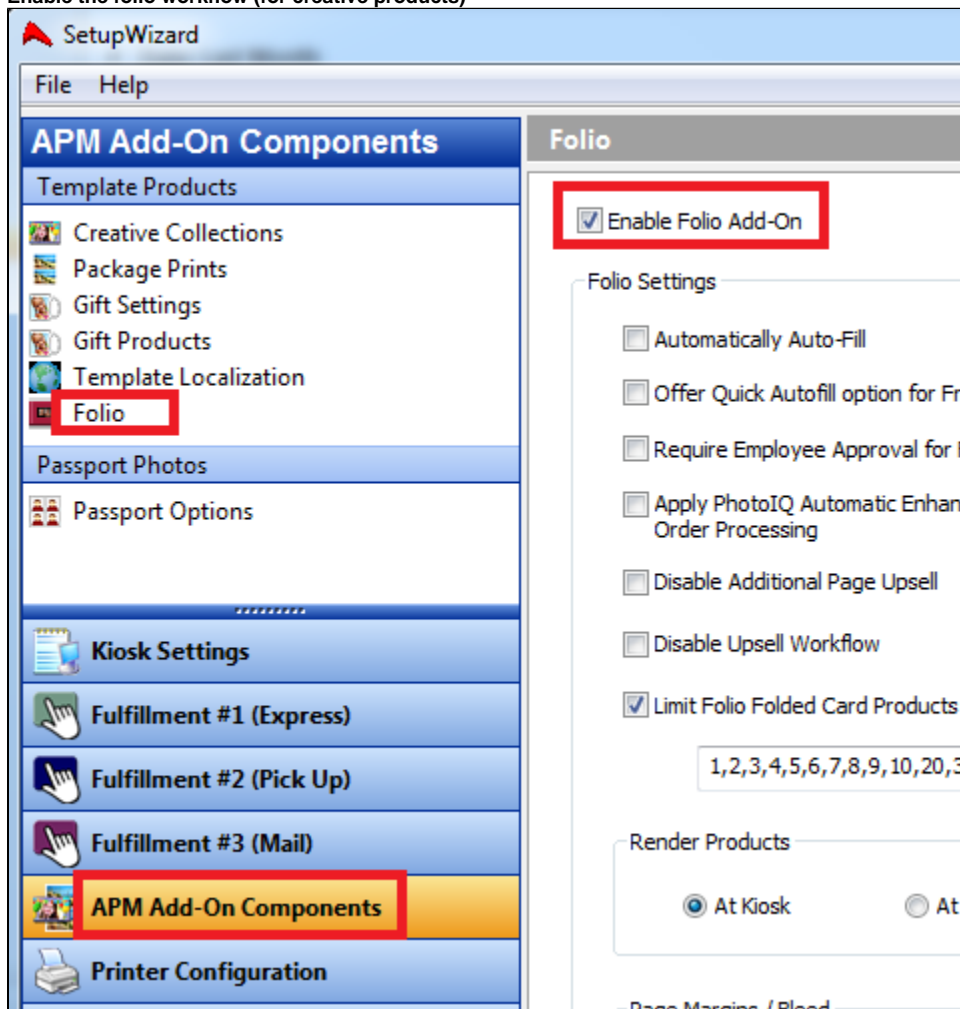
Moving an APM Kiosk ID (license) to a new computer

We offer kiosk license transfer as a service! Contact your sales rep to order.

If you are tech-savvy and have time to do it yourself, here are the steps.

1. **Install** new kiosk software on your new computer.
 - a. Only the updater is posted on myLab... please contact support@photofinale.com for the link to the full installer.
 - b. In your email, please include the APM ID of the unit being replaced so we can clear the activation.
2. **Activate** the new installation.
 - a. Run the installed software and input the activation we supply.
 - b. Once the software is activated, Quit the kiosk software.
3. In your computer settings, make the following changes:
 - a. **Windows Update:** Ensure the Windows auto-update is turned on and that all of the automatic Windows updates are installed (there can be several of these and it may require a few reboots before all are installed).
 - b. **Network and Sharing settings:** You will most likely need to make adjustments to the Network and Sharing settings in order for the machine to be detected and accessible on the network. We recommend these settings (A quick Google search will cover each option – they all reside in the Network and Sharing section of the Control Panel:
 - i. Turn on network discovery
 - ii. Enable file sharing
 - iii. Disable password-protected sharing.
 - iv. Set the machine to never go to sleep or hibernate.
4. **Copy settings from old kiosk.** If you are able to copy files from the old setup to the newly-updated kiosk (ie, the old machine isn't dead), here's what needs to be copied:
 - a. Copy the creative content from this directory: C:\APM_FOLDERS\Packages to the same location on the new machine
 - b. Copy pricing and settings...copy the xml files listed from c:\apm to the same location on the new machine:
 - apmconfig_apm.xml
 - apmconfig_dispatcher.xml
 - apmconfig_gift_pricing.xml
 - apmconfig_eqgifting.xml
 - apmconfig_printstation.xml
 - apmlang_custom.xml
 - apmconfig_pos.xml
 - apmconfig_receipt.xml
5. Open the Setup Wizard (APM Add-on Components > Folio).

- a. Enable the folio workflow (for creative products)



- b. Double check all other settings in the Setup Wizard.

6. **Reboot** and the kiosk software will run with the settings from your old machine applied.