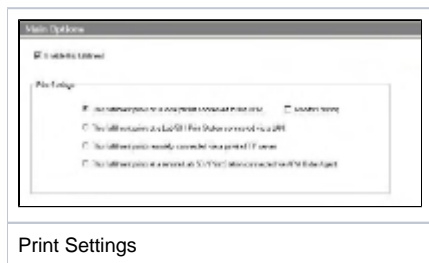


Silverwire OM HotFolder

The Silverwire OM HotFolder interface allows the APM or Lab 50 software to convert orders generated from an APM into a format that can be manually queued in the Silverwire OM software.

Prerequisites

1. The APM and/or Lab 50 machine needs to be able access the Hot Folder drop location, whether it be locally on the machine or across the network.
2. If Lab 50 is not present in the local installation, then at least one or more fulfillments must be enabled to print to a local printer connected to the APM. This is seen in the screenshot on below, taken from the main options of an enabled fulfillment in the Setup Wizard.



Setting Up a Silverwire OM HotFolder Using the Setup Wizard

The Setup Wizard is used to configure the APM to print to a Silverwire OM Hotfolder.

This process includes the following steps:

1. Adding the printer interface and editing the general settings.
2. Assigning printable products to the interface.