

Setting up sRGB Source Profile on the EQ-9800 & 9850

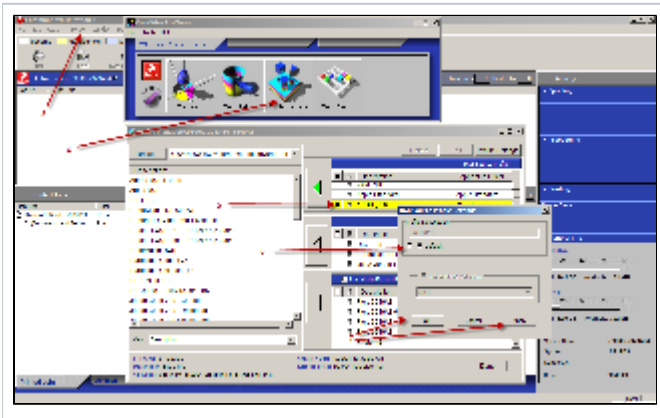
One way to help improve the overall quality of the EQ-9800/9850 series printers is to use the sRGB profile as the default color input profile.

To change the default color profile, please do the following:

1. Open **Command Workstation** on your machine, (Ex. *Start Menu -> Fiery -> Command Workstation*). Alternatively, if you do not have **Command Workstation** installed, you can launch **Colorwise Pro Tools** from the Fiery menu, and skip to step 4 below.
2. When **Command Workstation** opens, click on the **Administrator** key, leave the password blank, and click on the **Log In** button.



3. At the top of the **Command Workstation** screen, select **Server** and then **Manage Color**.
4. Click on the **Profile Manager** Button and a new window will appear.
5. At the top, right of this window, double-click on the sRGB profile.
6. In the new window that appears, click the **Default** checkbox.
7. Click **Apply** and **Save**.



The printer is now set to use sRGB as the default input profile.

Note: After setting this profile, a re-calibration should be done with a densitometer and a calibration sheet printed out on plain paper. When calibrating, make sure that the calibration sheet has several pages underneath it for an accurate reading.