

Appendix Q - Fuji JobMaker

The Fuji JobMaker interface allows the APM or Lab 50 software to convert orders generated from an APM into a format that a Fuji machine running the JobMaker software can accept and print.

Prerequisites

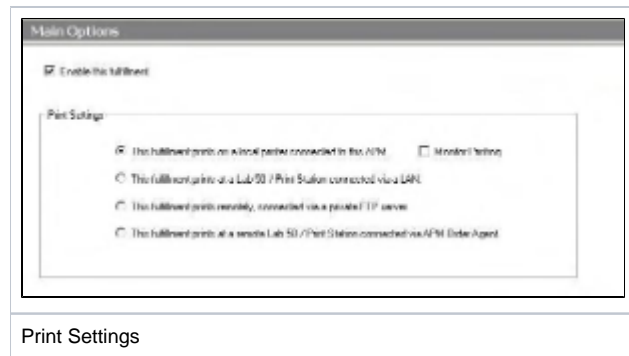
1. The APM and/or Lab 50 machine needs to be able to see the Fuji machine across the local area network, and vice versa.

****Note:** If a firewall is enabled on one or more of the machines, it may need to be configured to let each machine modify and write files to the other.

2. The Fuji Machine must have the ability to pull files from the APM and/or Lab 50 machine(s).

3. The APM and/or Lab 50 machine should be able to access the shared Orders and Images folders on the Fuji machine. ****Note:** The computer name of the Fuji machine may vary.

4. If Lab 50 is not present in the local installation, then at least one or more fulfillments must be enabled to print to a local printer connected to the APM. This is seen in the screenshot below, taken from the main options of an enabled fulfillment in the Setup Wizard.



Setting up the Fuji JobMaker Using the Setup Wizard

The Setup Wizard is used to configure the Fuji JobMaker Interface.

This process includes the following steps:

1. Adding the printer interface and editing the general settings.
2. Product setup from within the interface.
3. Assigning printable products to the interface.