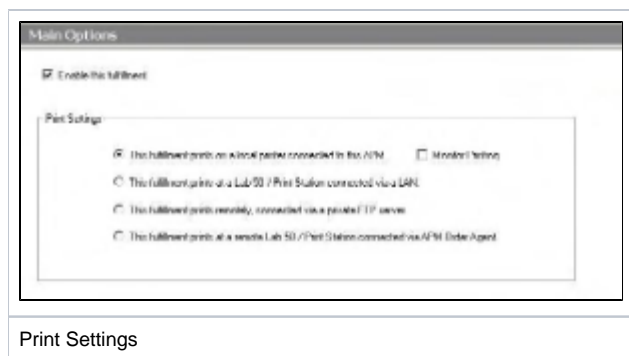


Appendix K - Photogize XConnect

The Photogize XConnect interface allows the APM or Lab 50 software to convert orders generated from an APM into a format the Photogize software (version 2.1 or higher) can accept and print.

Prerequisites

1. The APM and/or Lab 50 machine needs to be able to see the Photogize machine across the local area network and vice versa.
2. The products and auto-harvest option need to be setup prior to the APM or Lab 50 setup for the XConnect interface.
3. If Lab 50 is not present in the local installation, then at least one or more fulfillments must be enabled to print to a local printer connected to the APM. This is seen in the screenshot on below, taken from the main options of an enabled fulfillment in the Setup Wizard.



Setting Up Photogize XConnect Interface Using the Setup Wizard

The Setup Wizard is used to configure the APM to print to the Photogize XConnect Interface.

This process includes the following steps:

1. Adding the printer interface and editing the general settings.
2. Product setup from within the interface.
3. Assigning printable products to the interface.