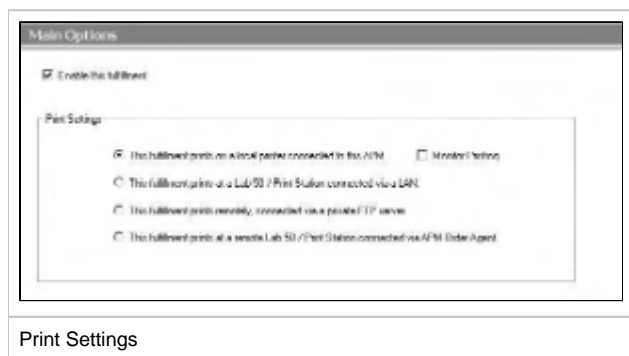


# Appendix R - DNP Dye-Sub Printer

The DNP Dye-Sub Printer interface allows the APM or Lab 50 software to print orders generated from an APM to one or more DNP printers directly attached to the machine. This interface enables special DNP capabilities, such as printer pooling, that are not in the Windows driver.

## Prerequisites

1. The Windows driver for the DNP printer(s) needs to be properly installed and configured to print the correct size on the APM or Lab 50 machine. This needs to be done BEFORE you begin setup of the printer within the APM or Lab 50 software.
2. The DNP Printer needs to have the latest firmware installed.
3. If Lab 50 is not present in the local installation, then at least one or more fulfillments must be enabled to print to a local printer connected to the APM. This is seen in the screenshot below, taken from the main options of an enabled fulfillment in the Setup Wizard.



## Setting up DNP Dye-Sub Printer Using Setup Wizard

The Setup Wizard is used to configure the DNP Dye-Sub Printer Interface.

**This process includes the following steps:**

1. Adding the printer interface and editing the general settings.
2. Assigning printable products to the interface.