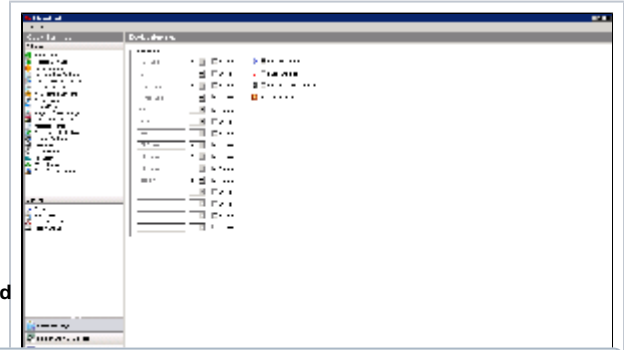


Device Setup

Click on the **Device Setup** option in the **Primary Navigation Pane**. This screen may be used to change which drives are enabled, which drive letters are associated with each drive on your APM, whether or not to load RAW files, and whether or not Bluetooth and/or Infrared are available as import options for photos. These device settings need to match the device letters that are assigned in Windows. The options on this screen will vary between APM hardware models.

****Duplicate drive letters are not allowed for drives that are enabled. If you duplicate drive letters, you will be prompted to make a change before you can continue.**

To enable a drive, select the drive letter from the pull-down list and check the **Enabled** checkbox. To disable, remove the checkmark.



Third Party Card Reader

****Note:** If the APM software was purchased as software-only and some devices do not share the same drive letter and/or the system does not display all of your components, these options can be edited in the XML files, if the current settings do not match up 100% for the descriptions. Please contact Lucidiom Technical Support for additional information.

Other Settings and Device Connections

- **Bluetooth and Infrared:** You also use this screen to enable/disable Bluetooth and Infrared options by checking/un-checking the boxes on the far right side of the screen.
- **RAW Files:** RAW file support may be enabled or disabled by checking the box next to the option. Please be advised that because RAW files do not have a standardized format, some image files may not be able to be loaded on the APM. The APM recognizes most RAW files saved at 12-bits per channel.
- **Portable Devices (iPhone, iPad, Android devices, Blackberrys, etc):** To enable the APMs to read from Apple Devices, Android Devices, Blackberrys and the like, the checkbox for **Enable Apple iOS Detection** must be checked. **Note:** This does require the Facebook Connect license for the APM.