

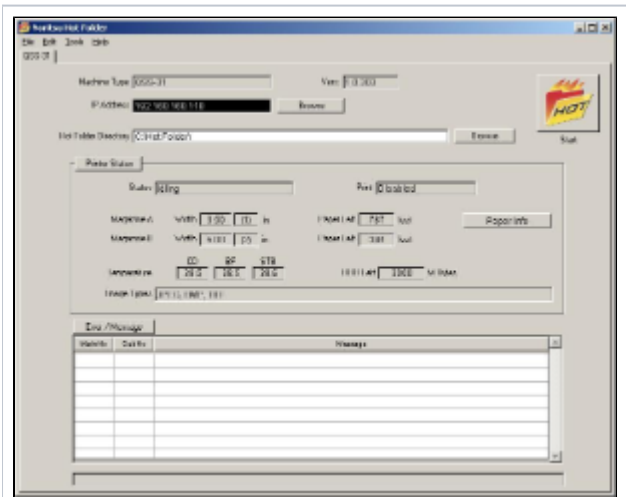
# Appendix J - Noritsu QSS HotFolder

The Noritsu QSS HotFolder interface allows the APM or Lab 50 software to convert orders generated from an APM into a format the Noritsu QSS Hot Folder software (which is an available option from Noritsu) can accept and print.

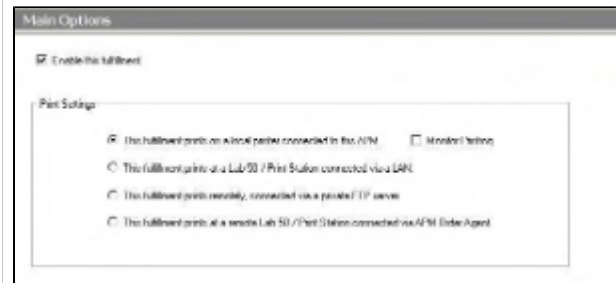
**\*\*Note:** This interface has been superseded by the Noritsu DPOF printer interface. It is highly recommended to use the DPOF interface in place of the QSS Hotfolder interface, it provides greater control over order placement and processing.

## Prerequisites

1. The APM and/or Lab 50 need to be able to see the Noritsu QSS HotFolder machine across the local area network and vice versa.
2. In the Noritsu QSS HotFolder software, it is required to enter in the IP Address of the Noritsu Printer, and the Hot Folder Directory which should be the same path as the order output folder of the APM or Lab 50 machine.
3. If Lab 50 is not present in the local installation, then at least one or more fulfillments must be enabled to print to a local printer connected to the APM. This is seen in the screenshot on the next page, taken from the main options of an enabled fulfillment in the Setup Wizard.



Noritsu Hot Folder Settings



Print Settings

## Setting up the QSS HotFolder Using the Setup Wizard

The Setup Wizard is used to configure the APM to print to the Noritsu QSS HotFolder Interface.

**This process includes the following steps:**

1. Adding the printer interface and editing the general settings.
2. Product setup from within the interface.
3. Assigning printable products to the interface.