

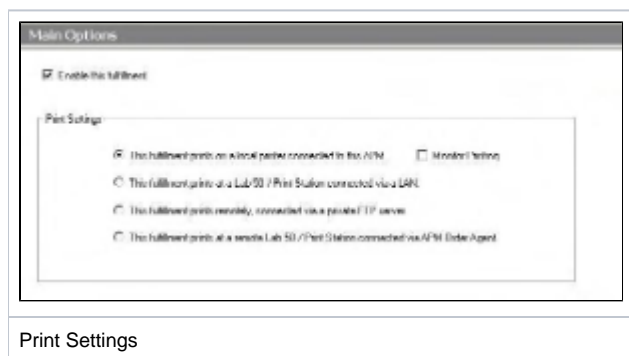
Appendix I - Noritsu NetOrder

The Noritsu NetOrder interface allows the APM or Lab 50 software to convert orders generated from an APM into a format a Noritsu machine running in NetOrder mode can accept and print.

****Note:** This is an older interface and is rarely used. Instead, it is best to use the Noritsu DPOF interface and set it up for NetOrder compatibility mode. However, this interface is available for those who still wish to use it.

Prerequisites

1. The APM and/or Lab 50 need to be able to see the Noritsu machine across the local area network and vice versa.
2. NetOrder mode must be properly configured and running on the Noritsu printer. (Please refer to Noritsu documentation for setup).
3. If Lab 50 is not present in the local installation, then at least one or more fulfillments must be enabled to print to a local printer connected to the APM. This is seen in the screenshot below, taken from the main options of an enabled fulfillment in the Setup Wizard.



Setting up the Noritsu NetOrder with Setup Wizard

The Setup Wizard is used to configure the APM to print to the NetOrder interface.

This process includes the following steps:

1. Adding the printer interface and editing the general settings.
2. Product setup from within the interface.
3. Assigning printable products to the interface.