

# Appendix E - Fuji PIC PRO

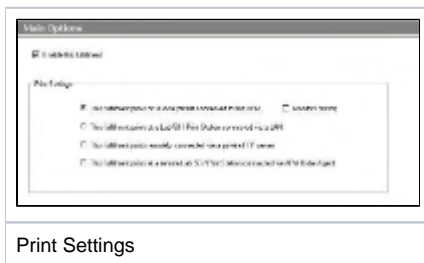
The Fuji Frontier PIC 2.6 PRO interface allows the APM or Lab 50 software to convert orders generated from an APM into a format a Fuji machine running the PIC PRO software version 2.6 can accept and print. The PIC PRO software is not deployed on the Fuji Frontier very frequently. This interface should not be used unless you are certain you have the PRO software, as the PIC 2.6 interface (described in Appendix D) is used in most installations.

## Prerequisites

1. The APM and/or Lab 50 machine needs to be able to see the PIC machine across the local area network, and vice versa. **Note:** If a firewall is enabled on one or more of the machines, it may need to be reconfigured to let each machine writes files to the other.
2. The Fuji Machine must have the ability to pull files from the APM and/or Lab 50 machine(s).
3. The APM and/or Lab 50 machine should be able to access to the data folders on the PIC machine. Example: \\LabServer1\Order Data\

**\*\*Note:** This may require creating a new user account to match the account on the PIC machine.

4. If Lab 50 is not present in the local installation, then at least one or more fulfillments must be enabled to print to a local printer connected to the APM. This is seen in the screenshot below, taken from the main options of an enabled fulfillment in the Setup Wizard.



## Setting up the Fuji PIC PRO 2.6 Interface Using the Setup Wizard

The Setup Wizard is used to configure the APM to print to the Fuji Frontier PIC PRO 2.6 Interface.

**This process includes the following steps:**

1. Adding the printer interface and editing the general settings.
2. Product setup from within the interface.
3. Assigning printable products to the interface.