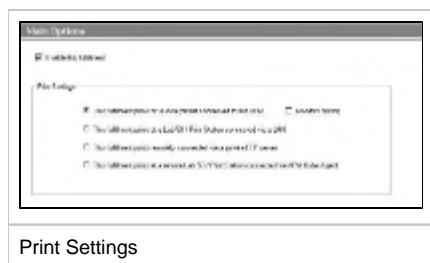


Appendix A - Agfa D-Workflow

The Agfa D-Workflow interface allows the APM or Lab 50 software to convert orders generated from an APM into a format that D-Workflow (version 2.64 or higher) can accept and print.

Prerequisites

1. The APM and/or Lab 50 software needs to be able to see the D-Workflow machine across the local area network and vice versa.
2. D-Workflow must be on version 2.64 or higher and use 28k ATTY files on the APM/Lab 50 and D-Workflow machines.
3. If Lab 50 is not present in the local installation, then at least one or more fulfillments must be enabled to print to a local printer connected to the APM. This is seen in the screenshot below, taken from the main options of an enabled fulfillment in the Setup Wizard.



Setting up the D-Workflow Using Setup Wizard

The Setup Wizard is used to configure the APM to print to the D-Workflow Interface.

This process includes the following steps:

1. Adding the printer interface and editing the general settings.
2. Product setup from within the interface.
3. Assigning printable products to the interface.